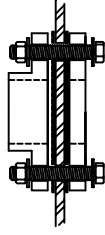


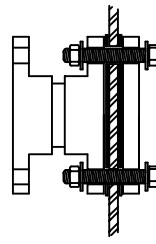
**uPVC FULL FACE FLANGE SOCKET ASSEMBLY:**

- Provides a plain solvent weld socket
- Available from 1/2" to 6"



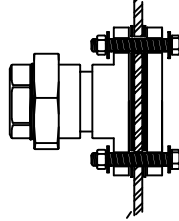
**uPVC FULL FACE FLANGED SPIGOT ASSEMBLY:**

- Provides a mating flange - PN16 as standard or Table D as option
- Available from 1/2" to 6"



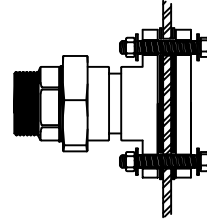
**BRASS, FEMALE COMPOSITE UNION ASSEMBLY:**

- Provides a BSP Female thread
- With uPVC flanges
- Available from 1/2" to 3"



**BRASS, MALE COMPOSITE UNION ASSEMBLY:**

- Provides a BSP male thread
- With uPVC flanges
- Available from 1/2" to 3"



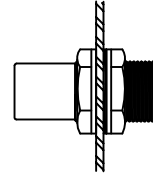
**BRASS (de-zinc.) COMPRESSION FITTING:**

- Suitable for one-piece tanks (up to 1220mm / 4'0" in depth)
- Available from 1/2" to 2"



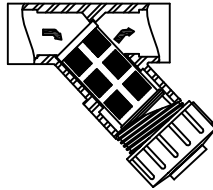
**uPVC TANK CONNECTOR:**

- Recommended for high level applications only, ie; overflows and warning pipes
- Available from 1/2" to 4"



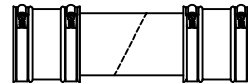
**uPVC Y-TYPE IN-LINE STRAINER UNIT: FOR OVERFLOWS.**

- Suitable for siting horizontally or vertically
- Can be cleaned whilst unit fixed into pipework
- Available from 1/2" to 4"



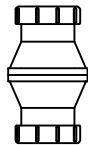
**IN-LINE 'MALSREEN' STRAINER UNIT: FOR OVERFLOWS.**

- Suitable for siting horizontally or vertically in pipework
- Can be cleaned by removing rubber sleeves (secured with jubilee clips)
- Available from 2" to 6"



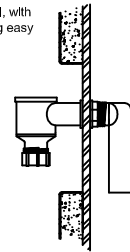
**POLYPROPYLENE IN-LINE STRAINER UNIT: FOR OVERFLOWS**

- Suitable for siting vertically in pipework
- Available from 1" to 2"



**POLYPROPYLENE STRAINER ASSEMBLIES: FOR OVERFLOWS**

- Comprising of a connection fitted to the tank wall, with an internal dip pipe and external strainer (enabling easy cleaning) and compression end.
- Available in 3/4", 1 1/4" & 1 1/2"



**BRASS ESSEX FLANGE:**

- With a female BSP thread
- Supplied loose for site fitting by others
- Available from 1/2" to 2 1/4"

